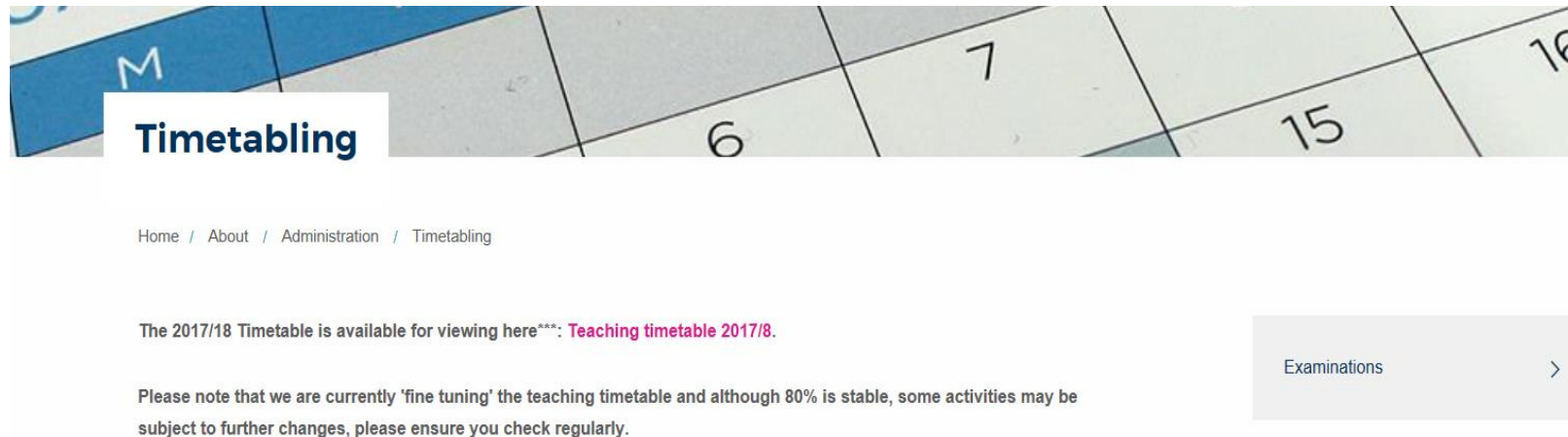


Student Timetabling Guide 2017/8



Accessing your Personal Timetable



You can access the Timetabling site, where you can find a lot of useful information, at this link:

<http://www.brunel.ac.uk/about/administration/timetabling>

You can also go straight to your timetable by using this link:

<https://teaching.brunel.ac.uk/SWS-1718/default.aspx>

Student Timetabling Guide 2017/8



Once you have clicked on the 2017/8 timetable link you will be directed to the Login page.

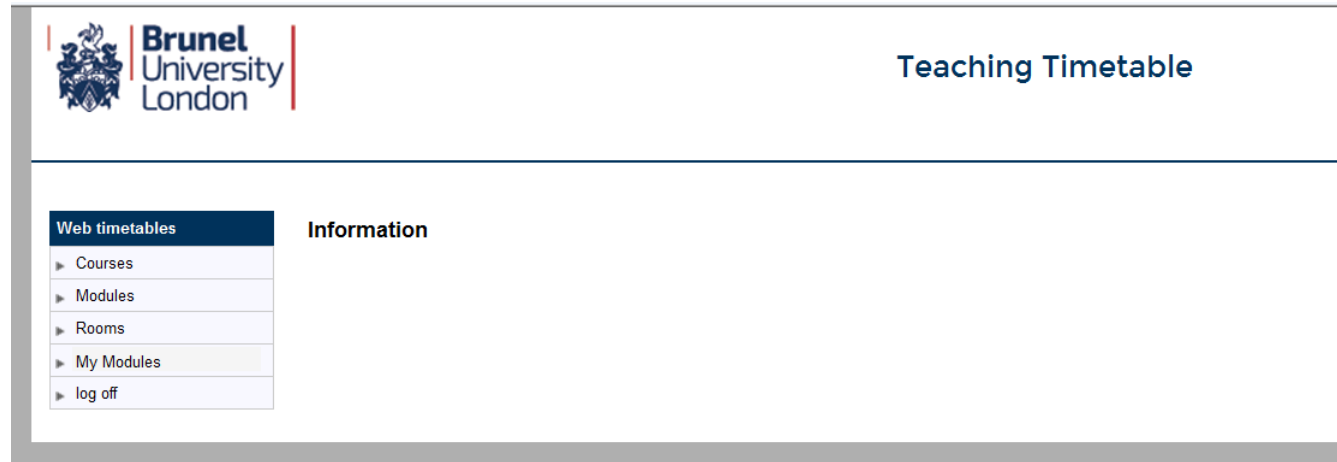
A screenshot of the 'Teaching Timetable' login page. The page header includes the Brunel University London logo and the text 'Teaching Timetable'. The main content area contains a 'Login' form with the following elements: a title 'Login', a prompt 'Please provide your username and password', a 'User Name' label and input field, a 'Password' label and input field, and a 'Login' button.

Log in using your **Student Number** (not your Network Username) and your password. **Please note that non- alphanumeric characters (eg. !?£\$) may not be recognised.**

If you have password problems, please contact Computing Support at computing-support@brunel.ac.uk, call 01895 265888 or visit them in the Library. **The Timetabling team cannot assist with password issues or if you have any other trouble logging on.**

You will need to complete the module selection task in eVision before viewing your timetable. Please go to <https://evision.brunel.ac.uk> to confirm your choices if you haven't done so.

Student Timetabling Guide 2017/8



You can view your timetable in a number of different ways:

- **My Modules** will display all of the specific modules that you are registered to take and will show all associated activities including groups that you may not be part of;
- **Courses** will allow you to see all modules that are being taught on your course, even if you aren't taking them;
- **Modules** allows you to search for any modules to view when and where they will be taught;
- **Rooms** allows you to see what is happening in specific rooms. There is also a **My Timetable** tab; however this may not be available for all courses.

Student Timetabling Guide 2017/8



Upon clicking **My Modules**, a number of drop-down menus will appear. Use these to check your class times and locations. Please check back regularly as timetables are subject to change.

A screenshot of the 'Teaching Timetable' web interface. The page has a header with the Brunel University London logo and the title 'Teaching Timetable'. On the left is a navigation menu with 'My Modules' highlighted. The main content area is titled 'Module Timetables:' and contains four selection options: 'Select Module(s)', 'Select Period', 'Select Day(s)', and 'Type Of Report'. Each option has a corresponding drop-down menu. The 'Select Module(s)' menu is open, showing a list of module codes: EN3000, EN3030, EN3036, EN3037, and EN3013. The 'Select Period' menu is open, showing 'This week', 'Next week', 'All Terms', and 'Term 1'. The 'Select Day(s)' menu is open, showing 'Monday-Sunday', 'Monday', 'Tuesday', 'Wednesday', 'Thursday', 'Friday', and 'Saturday'. The 'Type Of Report' menu is open, showing 'Combined Timetable'. At the bottom of the form are two buttons: 'View Timetable' and 'Reset'.

Select Module(s): Pick the modules you wish to view.

Select Period: Choose the length of time you wish to view (which week of term).

Select Day(s): Choose the days you wish to view.

Student Timetabling Guide 2017/8



Type of Report: You can choose between Grid Timetable, List Timetable and Combined Timetable depending on how you wish to view your modules.

Viewing a Combined Timetable

EE2612, EE2613, EE2614, EE2615, EE2616, EE2617, EE2703, EE2704, EE2705, EE27

For information regarding the seminar and tutorial groups you are assigned - look at Blackboard Learn School Pages or contact your School

Monday

Activity	Description	Start	End	Week(s)	Room	Staff	Type
EE2708/Lec2	Motion Graphics Applications	9:00	10:00	6, 9	TOWC 005,TOWC 212	Winter, Wolf	Lec
EE2708/Lab2	Motion Graphics Applications	10:00	12:00	6, 9	TOWC 005,TOWC 212	Winter, Wolf	Workshop

Tuesday

Activity	Description	Start	End	Week(s)	Room	Staff	Type
EE2706/Lab	Programming for the Moving Image	11:00	13:00	1-12	TOWC 005	Molga, Kasia	Workshop
EE2706/Lec	Programming for the Moving Image	14:00	15:00	1-12	LECT 005	Molga, Kasia	Lec
EE2617/Lec	Marketing & Professional Dev	15:00	16:00	4-12	HALB 055	Jarvis, Chris	Lec
EE2617/Lec	Marketing & Professional Dev	16:00	18:00	4-12	HWLL 004	Jarvis, Chris	Lec
EE2614/Lec	Experimental Digital Futures	17:00	19:00	1-12, 16-27	LECT 061	Molga, Kasia, Agius, Harry	Lec



Student Timetabling Guide 2017/8

Viewing a Grid Timetable

Games Design Level - 2-

Weeks: 1-12 (22 Sep 2014-14 Dec 2014)

	8:00	8:30	9:00	9:30	10:00	10:30	11:00	11:30	12:00	12:30	13:00	13:30	14:00	14:30	15:00	15:30	16:00	16:30	17:00	17:30	18:00	18:30	19:00	19:30	20:00	20:30	21:00	21:30	22:00	22:30				
Mon			FM2604 Animation GASK 2, 4, 6, 8, 10, 12, 16, 18, 20, 170/2 O'Dell, Matthew							FM2602 Core Mechanics GASK 169 Parsler, Justin																								
			FM2602 GASK 2, 4, 6, 8, 10, 12, 16, 18, 20, 22, 169 Parsler, Justin																															
Tue			FM2603 Asset Creation Two GASK 2, 4, 6, 8, 10, 12, 16, 18, 20, 170/2 O'Dell, Matthew							FM2017/Lec Games Design 2/01 GASK 169 Cox, Chris																								
			FM2017/Lec Games Design 2 GASK 2, 4, 6, 8, 10, 12, 16, 18, 20, 22, 169 Cox, Chris							FM2603 Asset Creation Two/01 GASK 170/2 O'Dell, Matthew																								
Wed																																		
Thu											FM2018 Lecture LECT 2, 4, 6, 8, 10, 12, 16, 263 Boudreau, Kelly			FM2018 Seminar 1 GASK 2, 4, 6, 8, 10, 12, 16, 18, 20, 169 Boudreau, Kelly																				
			FM2016 Application Two GASK 2, 4, 6, 8, 10, 12, 16, 18, 20, 170/2 Cox, Chris							FM2016 Application Two/01 GASK 170/2 Cox, Chris																								
Fri			FM2004 Lec/Screening Scie LECT 215 Ingram, David											FM2004 Sem 1 LECT 1-6, 8-117 Ingram, David		FM2004 Sem 2 LECT 213 Ingram, David																		

- This is the description of the activity.
- This is the location code.
- This is the tutor who will be leading the session.
- These numbers show the weeks in which the activity will be taught in.
- This indicates the weeks and dates covered by the displayed timetable.

Start of activity

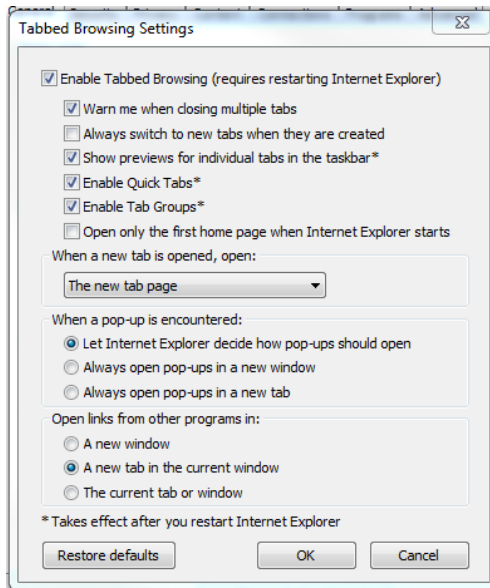
End of activity

Student Timetabling Guide 2017/8

Troubleshooting

If you are using Internet Explorer, your timetable may open in a pop-up behind the current window, making it hard to notice whether it has actually opened. Keep an eye out for this if you are struggling to see anything opening when you click on ***View Timetable***.

If you are using Internet Explorer you can remedy this by following these instructions:



1. Click on *Tools* and then *Internet Options*.
2. In the *General* tab, there is a heading called *Tabs*.
3. In IE 8, click the button marked *Settings*, in IE 10 click the button marked *Tabs*.
4. Click on “Let Internet Explorer decide how pop-ups should open”.

If you are using any other browser and are unable to rectify the problem please contact computing-support@brunel.ac.uk on 01895 265888. If you have any other timetable issues please contact timetabling@brunel.ac.uk with your query.